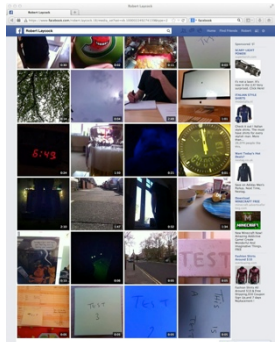




# Robert Laycock Annual Report 2013

Image: Whitley Bay, 1<sup>st</sup> January 2014, Harvey Laycock



42  
Year long video  
project on Facebook.



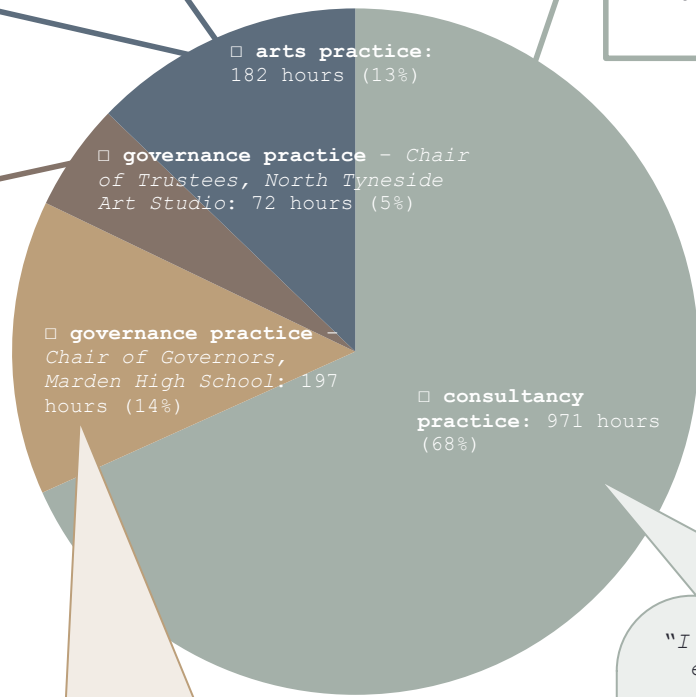
**Bounce**  
Video installation  
at Arthouses.

## How I spent my time

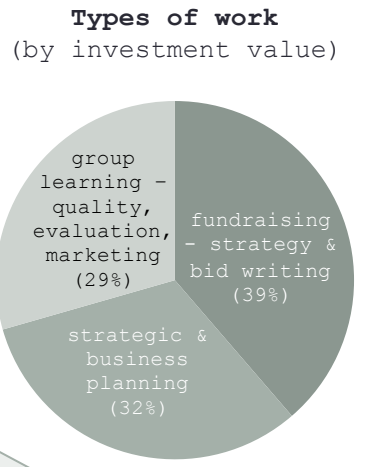
**Grew the organisation:**  
*Increased income, grew staff team, built up unrestricted reserves, appointed new trustees*

**Grew activity:** *Extended opening hours, increased range & volume of opportunities, 17 exhibitions, 11 visits*

**Supported individual growth:** *2 people returned to employment, 10 people took up voluntary work, 4 people progressed on to further education, 1 person completed a HND course, 4 people undertook Learn Direct courses*



**Who I worked with**  
*Arts Centre Washington, Berwick Volunteers Family Support, Carers Northumberland, Credit Union South East Northumberland, Crossings, Daybreak, Gallery Youth Project, Gem Arts, Helix Arts, Silx Teen Bar, Skimstone Arts, Them Wifies, Tin Arts, University of Sunderland Students' Union*



"The highly effective governing body display an accurate view of the school's performance and the changing needs of the local community. The governors reveal high ambitions and have a clear plan for the development of high quality provision for students. ...Governors are assiduous sharing their expertise..." Ofsted, December 2013.

"I can't begin to thank you enough for the huge and brilliant job you have done... You are making such an enormous difference to (our) capacity to survive and thrive. ...a million thanks."

"So great to see you today and super helpful as ever."

"Thanks Rob as always for your wonderful support."

Many thanks to all the great people & organisations I have worked with in 2013 - it has been a real pleasure.

& very best wishes for a successful, enjoyable, & impactful 2014!